

→ SUPPORTING THE FULFILMENT OF REPORTING OBLIGATIONS

TRANSBOUNDARY
water resources
MANAGEMENT

Poverty alleviation and
SOCIAL equity

Ecological
SUSTAINABILITY

SHARED WATER USE

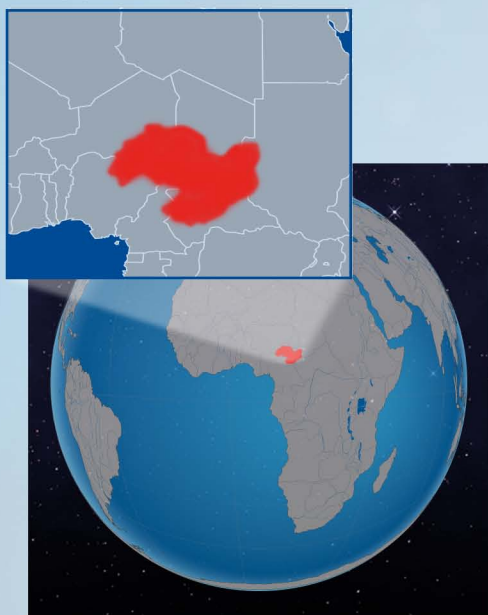
WATER charter reporting
OBLIGATIONS

IN COLLABORATION WITH:

Lake Chad Basin Commission
N'Djamena, Chad



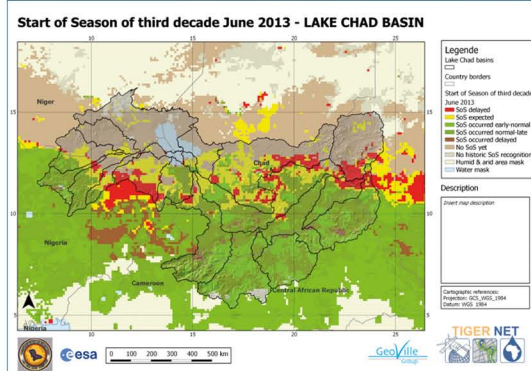
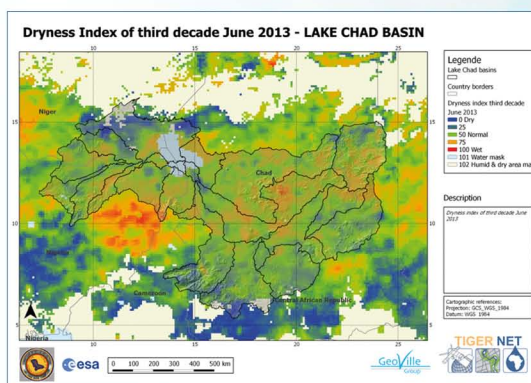
AREAS OF INTEREST



The Lake Chad Basin Observatory was established by the member states of the Lake Chad Basin Commission, **with the task to regularly generate knowledge-based products**. The aim is to enable all the stakeholders in the Lake Chad Basin (covering a surface of 2,300,000 km²) to coordinate the sustainable use of water within the Water Charter, to protect the Lake Chad Basin ecosystem and to guarantee a fair use of water resources and prevent conflicts related to shared water use.

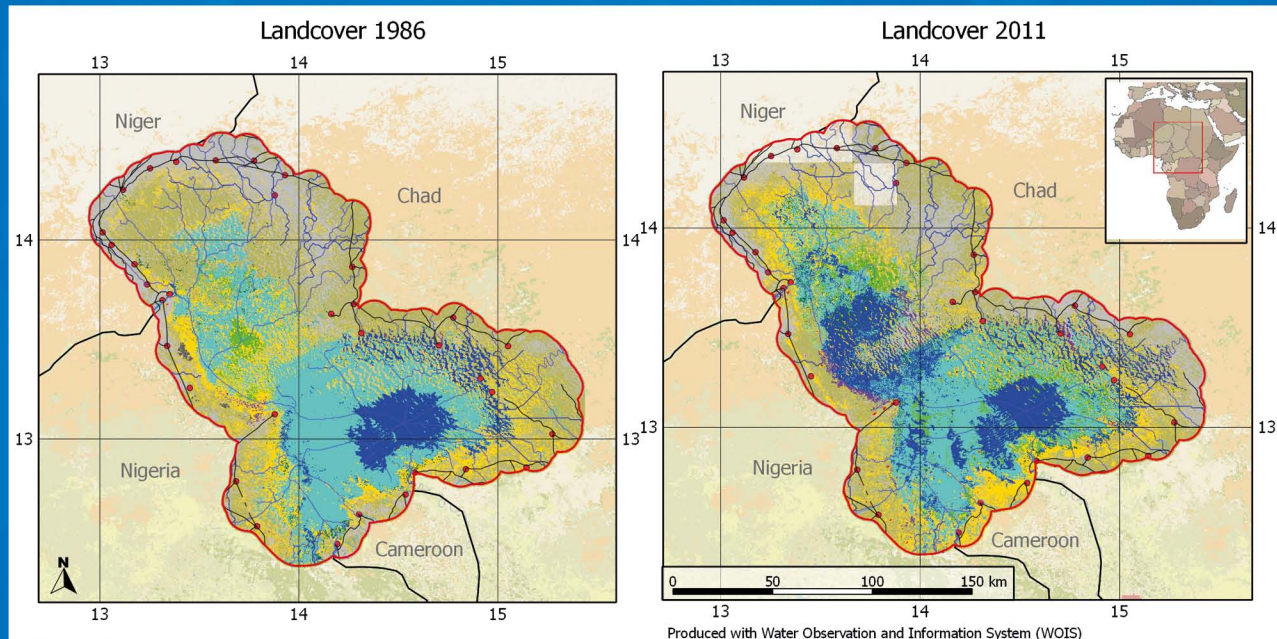
While in the past very limited information on the state and change of the ecosystems surrounding the Lake Chad were available, **the WOIS provides the capacity for basin wide assessment and reporting**. The WOIS has significantly contributed to generate **in April 2014 the first State of the Lake Chad Ecosystem Report** and will facilitate future report updates.

Using free satellite data, **the tool enables to historically document and monitor the quantity and quality of Lake Chad Basin waters and provides timely information on water management related issues**. In addition the tool allows Hydro-Meteorological monitoring enabling to document and monitor precipitation, evapotranspiration, soil moisture and derived indicators.



→ SUPPORTING THE FULFILMENT OF REPORTING OBLIGATIONS

HIGH RESOLUTION LANDCOVER 1986 / 2011, LAKE CHAD BASIN COMMISSION



Description

This map shows the Landcover in the year 1986 and 2011 of the Lake Chad Basin catchment for the Lake Chad Basin Commission. The product provides a monitoring service for high-resolution basin characterization at sub-basin level, including a recent land cover inventory as well as land cover change, providing information on long-term land change processes, such as affects of climate change or overexploitation (e.g. disappearance of vegetation, change of cropland area). In the Lake Chad catchment is serves as basis for an assessment of the seasonal water demand by water management related land cover classes.

Cartographic References:
Projection: GCS_WGS_1984
Datum: WGS 1984



“The WOIS is essentially helping water managers in Africa to integrate and transition their existing in-situ monitoring systems to a more cost-effective satellite based monitoring system.”

Mohammed Bila, Remote Sensing and GIS Expert, Lake Chad Basin Observatory

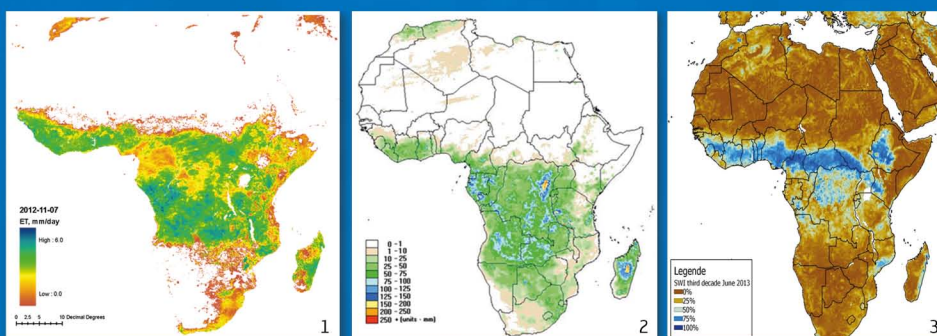
↑ Long term high resolution land cover characterization and monitoring of changes, showing major land cover characteristic relevant to integrated water resource management

Legend

- AOI Lake Chad Basin - Chad
- Built-up areas
- Rivers
- Streams

Landcover 1986 / 2011

- Forest
- Shrub and Bushland
- Grasland
- Bare soil sand rocks
- Non irrigated cultivated
- Irrigated cultivated
- Urban residential
- Urban commercial
- Mines and quarries
- Water bodies
- Wetlands
- Sparse Vegetation
- Burnt Areas
- Clouds
- Shadows



↑ Pan african hydro-meteorological components (1. evapotranspiration, 2. rainfall and 3. soil moisture) used for basin wide characterisation