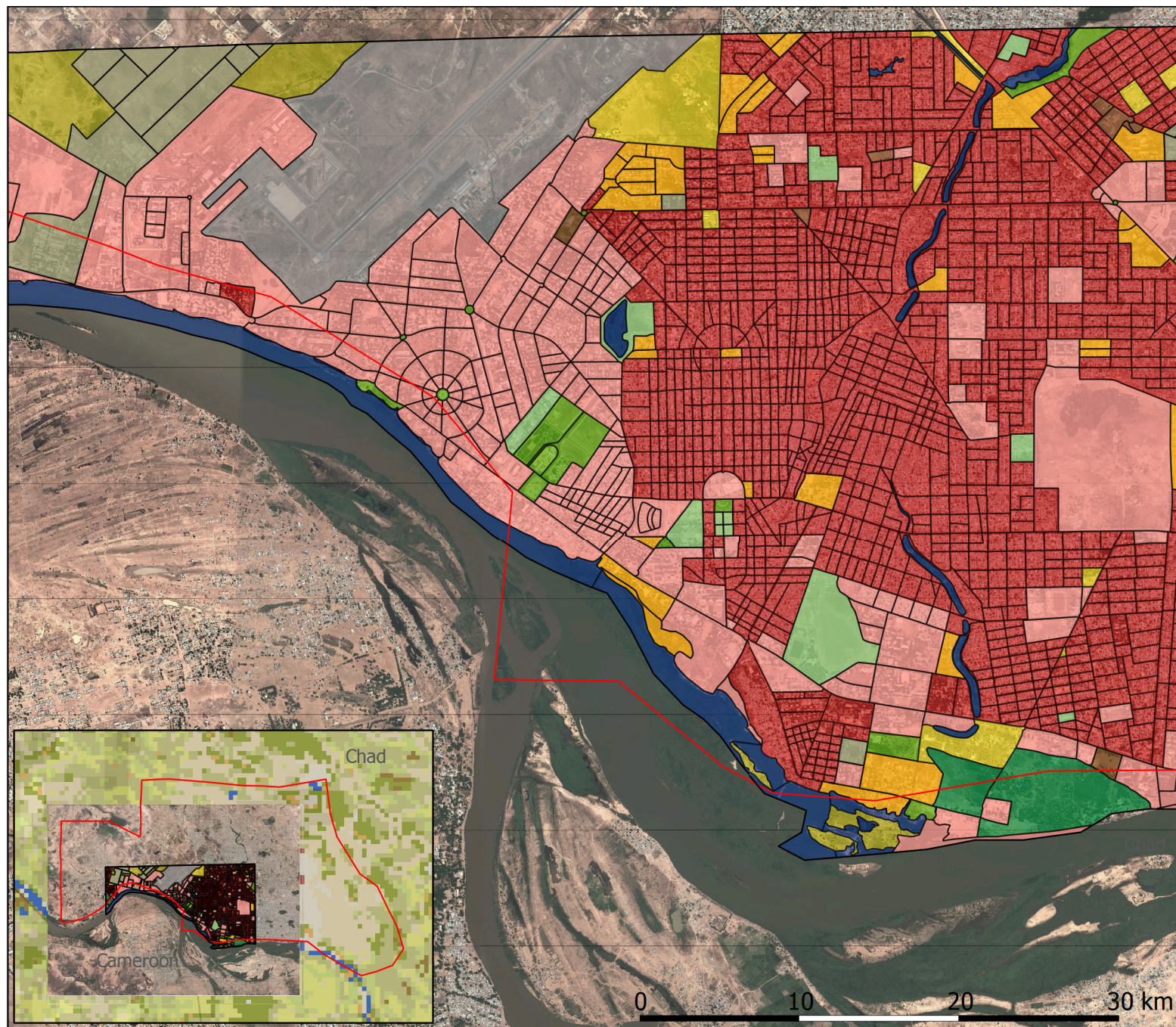
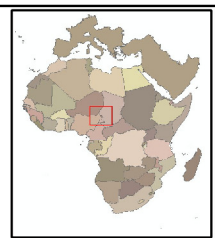


Sanitation planning support for N'Djamena



Legende

- AOI DC15
- AOI N'Djamena
- Landuse_WGS84
 - Airport
 - Construction sites
 - Forest
 - Grassland and bare surfaces
 - High housing density
 - Low housing density
 - Medium housing density
 - Riverbank
 - Urban area - other facilities
 - Urban area with dominant commercial use
 - Urban area with dominant industrial use
 - Urban green area
 - Vacant land inside urban
- Globcovr2009_DC07
- Hillshade



Description

This map shows the VHR land use product overlying on a satellite imagery with 0.5 m resolution. The basis is a city building block land cover/land use map derived from an open source street layer, VHR satellite image and a city map of N'Djamena. This serves as input for a population/housing type driven model used to estimate current and future water demand for sanitation and linked to the urban land cover classes. This service provides the city water department with a map and model for sanitation planning. This demonstration case shall act as demonstration to the local city water department.

Cartographic references:
 Projection: GCS_WGS_1984
 Datum: WGS_1984

Source:
 GeoEye Satellite image (23/10/2012)
 Resolution: 0,5m pansharpened

